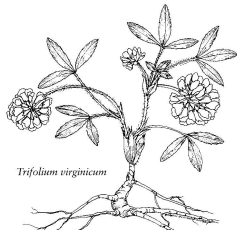


# NATIVE NOTES



Kate's Mountain Clover

WEST VIRGINIA NATIVE PLANT SOCIETY NEWSLETTER

VOLUME 26:1

SPRING 2018

Judy Dumke-Editor: E-mail-dumke@live.marshall.edu Phone 740-894-6859

❖ ❖ ❖ visit us at [www.wvnps.org](http://www.wvnps.org) ❖ ❖ ❖

## April 7 2018 Caring about Carex A genus that terrifies many

The West Virginia Native Plant Society will hold its spring meeting April 7, 2018 at the Ohio River Islands National Wildlife Refuge headquarters near Williamstown in Wood County, West Virginia. The highlight will be a presentation on sedges from 1:00 pm to 3:00 pm, with emphasis on the genus *Carex* to be presented by Jim Vanderhorst, Vegetation Ecologist, Natural Heritage Program, West Virginia Division of Natural Resources. This genus has a reputation for difficulty because not only is it large, 135 species listed in the *Checklist and Atlas of the Vascular Flora of WV* with 55 of those on the rare list, but it also has a specialized morphological nomenclature. To complicate matters, the taxonomy is in flux. Jim works to identify, describe, and protect the natural forests, woodlands, and wetlands of West Virginia. He has co-authored publications on the flora of the New and Gauley Rivers and developed informative web pages describing various ecological habitats found in West Virginia: [http://www.wvdnr.gov/wildlife/fact sheets/](http://www.wvdnr.gov/wildlife/fact%20sheets/)

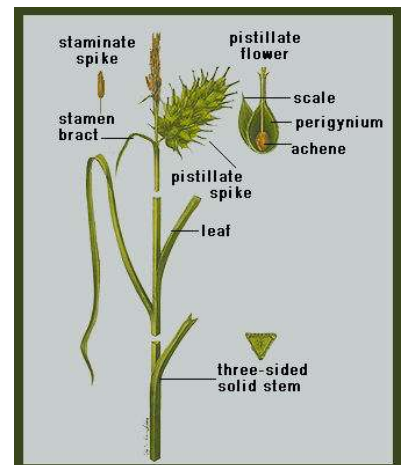


Image from the Canadian encyclopedia

Jim has offered to examine and identify specimens members bring to the meeting.

The Ohio River Island NWR headquarters is located off Exit 185 of I-77; follow St Rt. 14 into Williamstown, and turn right onto CR 1 and follow the brown refuge signs. The headquarters is about two miles out River Road on the left. For further information on the ORWLR visit:

<https://www.fws.gov/uploadedFiles/OhioRiverGeneralBrochure2013.pdf>

The board business meeting will at 10:00; all members are welcome to attend. Lunch at noon will be on your own, picnic facilities are available. ❖

Contents	
	Page
Spring Workshop	1
Summer Field Trip	2
2017 Richie Co. Report	3
2017 Tucker County Report	4-5
Activities	6
News of WVNPS	7
Events/Membership form	8

# WV Native Plant Society Summer Field Trips

June 30-July 1, 2018

The West Virginia Native Plant Society will have a series of early Summer field trips to the Putman and Mason County area June 30-July 1, 2018. Locations we plan to visit include the Winfield wetlands, Eleanor city park, and Clifton F. McClintic Wildlife Management Area.

## Saturday, June 30

Our first stop will be at the Winfield wetlands located just east of Winfield on SR 35. Meet at the parking lot for the Mary Ingles trail head at 9:30 a.m.. The entrance to the Winfield wetland is a short distance further east on the left. These wetlands contain a nice patch of button bush and swamp white oak. Appalachian Power owns these wetlands and maintains a website for them at:

<http://www.appalachianpower.com/info/educational/WetlandsofWinfield.aspx>



Carolina Nature

Button Bush



After lunch (all meals on your own) we will proceed to the City Park in Eleanor, WV. The City Park is located on Park Rd. off CR 35/13 in Eleanor. Meet at 1:00 p.m. in the parking lot just past the swimming pool. We will walk some trails on the hillside in the park where there is a stand of mature blue ash trees that hopefully is still alive.

## Sunday, July 1



Skunk Cabbage

Sunday morning, we will have a walk in the Clifton F McClintic Wildlife Management Area located north of Point Pleasant off SR 62. Turn right onto CR 13 Camp Conley Rd. off SR 62. Meet at 9:30 a.m. at the intersection of CR 13 Camp Conley Road and CR 12/1 (Robinson Creek Road). The walk will cover a two-mile loop on a relatively level dirt road. There will be short side trips off road to venture into different habitats to see a wide variety of plants and trees such as swamp loosestrife, poison sumac, spanish oak, skunk cabbage, and crested shield fern. The walk will encompass a variety of habitats from ponds and wetlands to meadows and upland woods. ❀



Franklin Bonner USFS, Bugwood.org

## Field Trip Reports 2017

Kevin Campbell and Judi White have provided lists and photographs (Kevin) from the WVNPS trips in 2017. We should all be grateful for their submissions and dedication. As editor, I debated the inclusion of the entire list but something was so striking, and the photos so attractive that the lists are included. In using the *Checklist and Atlas of the Vascular Flora of West Virginia* for county records (yes, I know that it from 2006 and additional records have been added, particularly from Kevin) the trend revealed is significant.

	Species reported	County Records	Records Updated	% Critical Information	Listed Rare	% Rare
Richie County	53	15	18	62.2%	1	1.9%
Tucker County	130	6	11	3%	27	20.7%

As you can see there is a distinct difference between the two trips. We need to realize that Kevin puts a great deal of effort in planning trips that show of the botanical diversity of the state and others that increase the information about its less known areas.

*Judy Dumke editor*

### Plants seen on the North Bend Rail Trail

September 9, 2017

Ulmus americana	American elm OR
Acer nigrum	Black Sugar Maple
Kyllinga brevifolia	Shortleaf spike sedge SR Invasive
Aesculus flava	Yellow Buckeye
Lindera benzoin	Spicebush
Scrophularia marilandica	Maryland figwort
Solidago caesia	Wreath goldenrod R
Hydrangea arborescens	Wild hydrangea
Echinocystis lobata	Great Solomon's seal CR
Hybanthus concolor	Green violet
Campanulastrum americana	Tall bellflower OR
Botrychium virginianum	Rattlesnake fern OR
Dennstaedtia punctilobula	Hay-scented Fern CR
Ostrya virginianum	Ironwood, Hop hornbeam OR
Conoclinium coelestinum	Mistflower
Hackelia virginiana	Beggar's-Lice
Lapsana communis	Nipplewort CR
Solidago bicolor	Silver-rod OR
Helianthus microcephalus	Small-headed Sunflower
Oxalis grandis	Great yellow wood sorrel
Cyperus flavescens	Yellow flat sedge CR
Impatiens pallida	Pale touch-me-not
Tridens flavus	Purpletop OR
Erechtites hieraciifolius	Pilewort
Ulmus rubra	Slippery elm
Rhus copallinum	Winged sumac
Cunila origanoides	Dittany OR
Quercus muehlenbergii	Yellow oak or chinquapin oak CR
Quercus prinus	Chestnut oak OR
Lobelia siphilitica	Great blue lobelia OR
Asarum canadense	Wild ginger
Staphylea trifolia	Bladdernut
Sedum ternatum	Wild stonecrop OR
Potentilla simplex	Common Cinquefoil
Viburnum prunifolium	Blackhaw
Symphoricarpos orbiculatus	Coralberry
Leersia virginica	White Grass CR
Chamaecrista nictitans	Wild Sensitive Plant OR
Muhlenbergia sylvatica	Woodland Muhly CR

### At a public stream access North Bend Lake



Lindernia dubia

Lindernia dubia	False Pimpernel S2 OR
Potamogeton epihydrus	Floating Pondweed OR
Lemna minor	Least Duckweed CR
Wolffia brasiliensis	Watermeal CR
Justicia americana	Water-Willow CR



Alisma subcordatum

Alisma subcordatum	Common water plantain
Phylla lanceolata	Fog-Fruit OR
Ludwigia peploides	Creeping Primrose-Willow CR
Diodia virginiana	Larger Buttonweed CR
Scutellaria lateriflora	Mad-Dog Skullcap OR
Panicum dichotomiflorum	Spreading Witch Grass CR
Lespedeza violacea	Violet Bushclover
Polygonum aviculare	Knotweed CR ❀

# Tucker County

## June 25-26 2017

### Plants observed near the Nature Center in Canaan Valley State Park

Danthonia compressa	Allegheny Flyback OR
Crataegus punctata	Dotted Thorn
Circaea alpina	Alpine Enchanter's Nightshade
Oxalis montana	White Wood Sorrel
Houstonia serpyllifolia	Thyme-Leaved Bluets OR
Euphorbia purpurea	Glade Spurge S2
Abies balsamea	Balsam Fir S1
Carex gynandra	Nodding Sedge
Tsuga canadensis	Eastern Hemlock
Fraxinus nigra	Black Ash S2
Veratrum viride	False Hellebore
Dryopteris cristata	Crested Shield Fern
Alnus rugosa ssp. rugosa	Speckled Alder
Schoenoplectrus tabernaemontani	Great Bulrush
Glyceria melicaria	Manna Grass
Juncus effusus	Common Rush, Lamp Rush
Rhamnus alnifolia	Alder-Leaved Buckthorn S1, S2
Spiraea alba	Pipestem
Hypericum densiflorum	Glade St. John's-Wort
Sorbus americana	Mountain Ash
Carex scoparia var. scoparia	Pointed Broom Sedge
Lysimachia quadrifolia	Whorled Loosestrife
Eriophorum virginicum	Cotton Grass
Carex trisperma	Three Seeded Sedge
Rubus hispidus	Hispid Dewberry
Rhynchospora alba	Beaked Rush
Betula alleghaniensis	Yellow Birch
Viola rotundifolia	Roundleaf Violet
Botrychium virginianum	Rattlesnake Fern
Arisaema triphyllum	Jack-in-the-Pulpit
Arisaema dracontium	Green Dragon

### In wet woods/bogs elsewhere in Canaan Valley

Caltha palustris	Marsh Marigold
Chrysosplenium americanum	Golden Saxifrage
Platanthera grandiflora	Large Purple Fringed Orchid
Polemonium vanbruntiae	Jacob's Ladder S2
Viburnum recognitum	Smooth Arrowwood
Magnolia acuminata	Cucumber Tree OR
Magnolia fraseri	Mountain Magnolia
Cypripedium reginae	Showy Lady's Slipper S1



Viburnum opulus

Viburnum opulus (formerly trilobum)	Cranberry Tree
Viburnum nudum	Wild Raisin
Cornus amomium	Silky Cornel OR
Viburnum cassinoides	Wild Raisin
Listeria smallii	Kidney-Leaf Twayblade S2
Mitchella repens	Partridge Berry
Symphoricarpos orbiculatus	Coralberry

### Dolly Sods overlooks and Northland Loop Trail.

Ilex montana	Mountain Holly
Menziesia pilosa	Minnie-Bush
Solidago uliginosa	Bog goldenrod
Acer pensylvanicum	Moosewood
Cerastrium nutan	Nodding Chickweed
Aenaria serpyllifolia	Thyme-Leaved Sandwort
Nemopanthus mucronatu	Wild Holly
Sorbus americana	Mountain Ash
Kalmia latifolia	Mountain Laurel
Lycopodium clavatum	Common Clubmoss
Dicentra exima	Bleeding Heart
Gaylussacia baccata	Black Huckleberry
Prunus pensylvanica	Pin Cherry, Pin Cherry OR
Amelanchier laevis	Smooth Serviceberry
Ribes glandulosum	Skunk Currant



Diervilla lonicera

Diervilla lonicera	Bush Honeysuckle
Aralia nudicaulis	Wild Sarsaparilla CR
Photinia melanocarpa	Black Chokeberry
Sambucus racemosa	Red Elderberry
Sambucus nigra ssp. canadensis	Black Elderberry OR
Rhododendron prinophyllum	Rose Azalea
Vaccinium myrtilloides	Velvet Leaf Blueberry
Drosera rotundifolia	Round Leaved Sundew S3

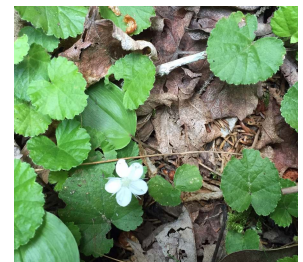


Drosera intermedia

Drosera intermedia	Sundew CR
Vaccinium oxycoccos	Small Cranberry S3
Deschampsia flexuosa	Crinkled Hairgrass
Gaultheria procumbens	Teaberry
Gaylussacia baccata	Black Huckleberry
Carex trisperma	Three Seeded Sedge
Coptis trifolia	Goldthread S2
Viburnum nudum var. cassinoides	Wild Raisin



Cornus canadensis



Dalibarda repens

Cornus canadensis  
 Dalibarda repens  
 Cypripedium acaule  
 Trillium undulatum  
 Vaccinium angustifolium  
 Vaccinium pallidum  
 Zigadenus leimanthoides  
 Carex folliculata  
 Sisyrinchium angustifolium

Dwarf Cornel, Bunchberry S2  
 Star-Violet S3  
 Pink Lady's Slipper  
 Painted Trillium  
 Lowbush Blueberry  
 Upland Low Blueberry  
 Oceanorus S2  
 Northern Long Sedge  
 Blue-Eyed Grass

Taxus canadensis  
 Vaccinium macrocarpon  
 Vaccinium oxycoccos  
 Listera smallii  
 Nemopanthus mucronatus  
 Calopogon tuberosus  
 Sarracenia purpurea  
 Eriophorum virginicum  
 Rhynchospora alba

Canada Yew OR S2, S3  
 Large Cranberry S3  
 Small Cranberry S3  
 Kidney-Leaf Twayblade S2  
 Wild Holly  
 Grass Pink S1  
 Pitcher Plant I  
 Cotton Grass  
 Beaked Rush

## Dolly Sods, Bear Rocks



Sibbaldiopsis tridentata



Orontium aquaticum

Sibbaldiopsis tridentata  
 Oenothera fruticosa  
 Salix sericea  
 Populus tremuloides  
 Photinia melanocarpa  
 Gallium mollugo  
 Liliun philadelphicum  
 Agrostis gigantea  
 Potentilla recta  
 Echium vulgare  
 Clematis occidentalis  
 Polypodium virginianum  
 Rockcap

Three-Toothed Cinquefoil  
 Narrow-Leaved Sundrops CR  
 Silky Willow  
 Quaking Aspen  
 Black Chokeberry  
 White bedstraw  
 Wood Lily S2, S3  
 Redtop  
 Upright Cinquefoil  
 Viper's Bugloss  
 Purple Virgin's Bower S2  
 Common Polypody Fern,

Orontium aquaticum  
 Menyanthes trifoliata  
 Parnassia asarifolia

Golden Club  
 Buckbean S1  
 Kidneyleaf Grass-of-Parnassus S2



Isoetes engelmanni

## Olson Bog



Pogonia ophioglossoides

Pogonia ophioglossoides

Rose Pogonia S2

Isoetes engelmanni  
 Lycopodiella inundata  
 Eleocharis sp.  
 Viburnum nudum var. cassinoides  
 Viburnum recognitum  
 Pyrola elliptica  
 Cryptotaenia canadensis  
 Smilax herbacea  
 Chamaedaphne calyculata  
 polifolia var. glaucophylla  
 Kalmia polifolia  
 Ilex verticillata  
 Dulichium arundinaceum  
 Lycopodium dendroideum  
 Lycopodium clavatum  
 Lycopodium digitatum

Englemann's Quillwort OR  
 Bog Clubmoss S2  
 Spikerush  
 Wild Raisin  
 Smooth Arrowwood  
 Shinleaf CR  
 Honewort  
 Carrion Flower  
 Leatherleaf Andromeda I  
 Bog Rosemary I  
 Swamp Laurel I  
 Winterberry Holly  
 Three-Way Sedge  
 Ground Pine  
 Common Clubmoss  
 Ground pine

Plant common names followed by I have been introduced to the Olson Bog site, and although naturalized, are not to be considered to be native.

## Olson Knob Fire Tower

Spiranthes lucida  
 Festuca subverticillata  
 Acer spicatum  
 Stellaria graminea

Shining Ladies' Tresses S1, S2 CR  
 Nodding Fescue  
 Mountain Maple  
 Lesser Stitchwort ❀

# Bits and Pieces

## Thank You Helen and Dan

At the 2017 annual meeting there were two changes in the board makeup. As many of you know, Helen Gibbens has served the WVNPS for many years as corresponding secretary, keeping the membership informed of events, news about WV's native plants and opportunities to learn more. In addition to this she has fielded the requests for information which often come in and maintained the membership list. It was her desire to transfer these tasks to a younger person. Sarah Friend has accepted the challenges of this office beginning in January 2018.

Dan Stevenson resigned as recording secretary as he is moving and will not be able to come to meetings as easily. The office is currently vacant. If you would like to volunteer or nominate someone, for this position please contact:

Steve Mace [sdmace@frontiernet.net](mailto:sdmace@frontiernet.net)  
(304)-674-5523

The WVNPS owes a great debt to these volunteers, if you could thank them in person, please do so. ♣

## Herbarium Donations

The treasurer received appreciative notes for the gifts to the herbaria at WVU, MU and WV Wesleyan, which were approved at the last meeting. Such gifts indicate to the institutions that there is indeed public support and interest in botanical collections. At a time when collections are being abandoned, moved to dead storage or sent searching for alternative institutions to house them, this show of support is critical.

Kathy Gregg at WV Wesleyan sent the following account of the use of funds to advance the use of the information contained on all of those sheets.

*I see from my records that I purchased gummed tape and mounting paper with the 2016 donation. This fall I was able to purchase the color card I mentioned in my thank you note last year. It's called a Colorchecker Classic and is much more permanent, with brighter colors, than the older, paper ones we had been using. I have been enjoying using the new color card since we received it in mid-fall (it was back-ordered for quite a while, guess there's a lot of demand for them!) ♣*

## Grass Guide

The board authorized a gift of \$100 toward the publication of the *Field Guide to Grasses of the Mid Atlantic Region* by Sarah Chamberlain of Pennsylvania State University. It will be published by the Penn State University press in 2018. Members of the board reviewed an early draft of the book at:

<https://psu.box.com/s/3mz6nydomm46foi1msh41pms4gdr44yd>

prior to making the decision and found that it included information that was greatly needed in West Virginia. ♣

## Tri State Chapter Field Trips

During either the first or second week of April a week day trip to Beech Fork State Park will be held. The exact date will be determined based on the predicted weather. The week day choice is necessary because of park usage.

For details and information contact:

[Romie5006@yahoo.com](mailto:Romie5006@yahoo.com) Or (304)-523-1049

May 5 Explore Lick Creek at East Lynn State Park Meet at 9:30 at the Lick Creek Parking lot.

GPS Info. (Latitude, Longitude):

38.09972, -82.31778

38°5'59"N, 82°19'4"W

From I-64 in Huntington, WV take Exit 8, south on HWY 152 to Wayne, WV. Travel east on Route 37 for 19 miles and follow signs ♣

## Resources

If anyone would care to submit a review of any of the following, the editor would appreciate receiving it.

The following guides may be downloaded for free at *Wild About Wildflowers: A classroom Activities Guide*

[http://flawildflowers.org/resources/pdfs/2016/WildAboutWildflowers\\_web.pdf](http://flawildflowers.org/resources/pdfs/2016/WildAboutWildflowers_web.pdf)

*Flora of the Southern and Mid Atlantic States 2015 version*

[http://www.herbarium.unc.edu/FloraArchives/WakleyFlora\\_2015-05-29.pdf](http://www.herbarium.unc.edu/FloraArchives/WakleyFlora_2015-05-29.pdf)

Regulated invasive plant sales in Ohio

<http://www.agri.ohio.gov/divs/Plant/Forms/InvasivePlantsNewsletter.pdf> ♣

# News of the West Virginia Native Plant Society

## Highlights of the September 9, 2017 Membership Meeting

- ! The 2017 membership meeting was held at a picnic shelter in North Bend State Park. Eight members attended, seven were board members
- ! The WVNPS remains solvent. There are 79 members, including life members. Steve Mace reported 3,092 Facebook members.
- ! Donations to state herbaria included \$250 to the WVU herbarium and \$100 to both the MU and WV Wesleyan herbaria.
- ! A motion was made and approved to support the Friends of Blackwater's petition to support the Endangered Species Act.
- ! Dan Stevenson announced that his pending relocation would preclude his continuing to serve as recording secretary.
- ! The new officers were elected and the results are in the adjacent sidebar. ♣

### New Members

Sharon Bias	Charleston, WV
Sue Groves	Hillsboro, WV
Adrian Melott	Lawrence, KS
Lou Scavnicky	Martinsburg, WV
Kenny Williams	Charleston, WV

### DUES ARE DUE

The corresponding secretary is planning to send out dues notices soon to those members who have yet to renew. If that includes you, there is a renewal form on the back of the newsletter, using it will save the WVNPS money for postage and printing and save the time and effort. ♣

### West Virginia Native Plant Society Officers

President -Steve Mace  
sdmace@frontiernet.net  
(304-674-5523)

Vice President -Peter Rykert  
eagle 26241@yahoo.com

Past President- Emily Grafton  
egraffon@gmail.com  
304-906-7846

Corresponding Secretary-  
Sarah Friend  
friend.sarah.a@gmail.com

Recording Secretary-Vacant

Treasurer - Judi White  
Judiwhite@suddenlink.net  
(304)-863-8352

### Directors

Kevin Campbell (1 year term)  
kevin.campbell@wv.gov

Donna Ford-Werntz (2 year term)  
dford2@wvu.edu  
(304)-293-0794

Chris Gatens (3 year term)  
(304)-458-2533  
cmgatens@frontier.com

### Chapter Officers

Eastern Panhandle-Rodney Dever  
rodneydever@virginia.edu  
(304-676-7438)

Kanawha Valley -Steve Mace  
See above

Tri-State -Romie Hughart  
romie 5006@yahoo.com  
(304)-523-1049

### Editor

Judith Dumke  
dumke@live.marshall.edu  
(740)-894-6859

## Events of Interest

West Virginia Native Plant Society  
July 30-July 1 Mason and Putnam  
Winfield Wetlands & McClintic WMA  
See page 2 for details

### West Virginia Parks

Use the following web site for details  
<https://wvstateparks.com/calendar/>

April 5 Blackwater Falls geology of the park  
April 7 Chief Logan State Park Wildflower Walk  
April 14 Kanawha State Forest, Charleston  
Wild Flower Walk  
April 27 Pipestem State Park Garlic Mustard Pull  
May 10-13 Blackwater Falls Wild Flower Pilgrimage

### West Virginia other

April 8, 15 and 22 Core Arboretum Morgantown  
Botany Department Spring Wildflower walks 2:00 P. M.  
<https://arboretum.wvu.edu/#calendar>

April 14 Nature in Spring Morgantown WV fee  
<https://gotowv.com/event/nature-in-spring-2/>

April 27-29 New River Gorge Wildflower Weekend free  
<https://www.nps.gov/neri/planyourvisit/wildflower-weekend.htm>

### Out of State

April 13-15 Ky Natural Bridge State Park and the Red River  
Gorge Wild Flower Weekend some fees  
[http://www.knps.org/wildflower\\_weekend.html](http://www.knps.org/wildflower_weekend.html)  
<http://naturepreserves.ky.gov/Pages/default.aspx>

May 18 Washington D.C. Smithsonian Institution Plants in the  
Past: Fossils and the Future.  
<http://botany.si.edu/sbs/>

## ***2017 WVNPS MEMBERSHIP RENEWAL OR INITIATION***

<b>Name(s)</b> _____	<b>CATEGORIES</b>	
<b>Address</b> _____ _____ _____	<b>Life</b>	<b>\$200</b>
	<b>Regular</b>	<b>12</b>
	<b>Student</b>	<b>8</b>
<b>Chapter affiliations (please circle)</b>	<b>Tri-State</b>	<b>6</b>
	<b>Kanawha Valley</b>	<b>0</b>
	<b>Eastern Panhandle</b>	<b>0</b>
<b>E-Mail</b> _____		

**I prefer to receive the Native Notes by mail \_\_\_\_\_ e-mail \_\_\_\_\_**

You must be a member of the statewide WVNPS in order to be a member of a local chapter.

Please make the check payable to West Virginia Native Plant Society;  
Include local chapter dues, if pertinent. Dues are for one calendar year.

Send dues to: Judi White  
WVNPS Treasurer  
148 Wellesley Dr.  
Washington WV 26181