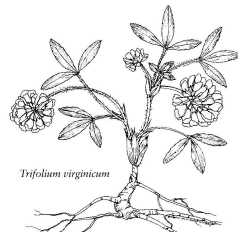


NATIVE



NOTES

Kate's Mountain Clover*

WEST VIRGINIA NATIVE PLANT SOCIETY NEWSLETTER

VOLUME 23:2

SUMMER/FALL 2015

Judy Dumke-Editor: E-mail-dumke@live.marshall.edu Phone 740-894-6859

Contents	
	Page
Field Trips	
Annual meeting	1-2
Hydrophyllum	3
Panther WMA Field Trip Report	4-7
Chapter Reports	8
News of WVNPS	9
Events, Resources Dues Form	10

❖ ❖ ❖ visit us at www.wvnps.org ❖ ❖ ❖

Field Trip Greenbrier County

Greenbrier River Rail Trail, Whites Draft Shale Barren
Meadow River Wildlife Management Area

September 12-13

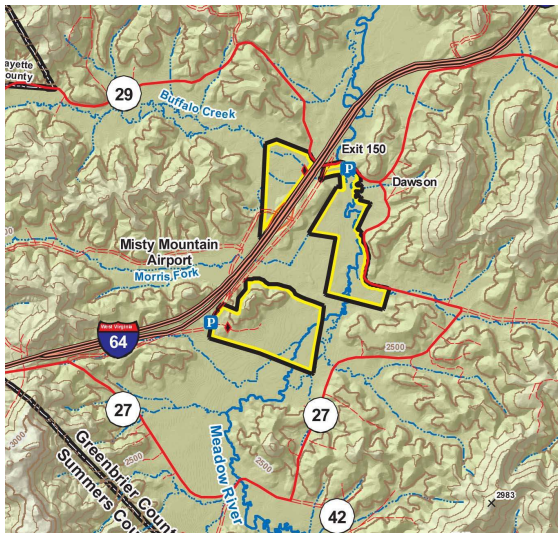
The West Virginia Native Plant Society will conduct field trips to the Greenbrier River Rail Trail and Whites Draft shale barren on Saturday and Meadow River Wildlife Management Area Sunday morning.

The Greenbrier River Rail Trail hike will be on Saturday, September 12. Participants will meet at the trail head parking lot at Keister, AKA Kister, WV at 9:00 a.m.. From US 219 north of Lewisburg, WV turn on Benedict Lane CR 219/19 (just south of the Greenbrier County Airport), turn right onto CR 30 then and immediate left onto CR 30/1. Stay left of this road to a small gravel parking lot at the trail. This scenic trail offers diverse habitats in a limestone region. We should see canada yew, oak fern, and quillwort. This will be a two to three mile round trip on a level path. Bring a packed lunch. The walk should last into the early afternoon.



Kates Mountain Clover Craig Stihler

The Whites Draft shale barren walk at will begin at 4:30 p.m.. From White Sulpher Springs take SR 92 north eight miles just north of Alvon. Turn right at the church onto CR 15/3 Whites Draft Rd. The shale barren is about .5 mile out at the first stream crossing on the left side (Monongahela National Forest property) of the road. Here we can see whitehair leatherflower, kates mountain clover, yellow buckwheat, and other shale barren species. Those attending the annual meeting will receive directions at the meeting.



Sunday September 13, 2015

9 A.M.

Meadow River WMA walk

Meet at the gas station at the Dawson exit of I-64

Lodging:

Arrangements must be made by the participants, a few of the options in the area are listed below.

Motels: Super 8, Lewisburg, WV 304-647-3188; Quality Inn, Lewisburg, WV 304-645-7722

Village Inn, White Sulpher Springs, WV 304-536-3353

Cabins: Greenbrier State Forest 800-CALL WVA

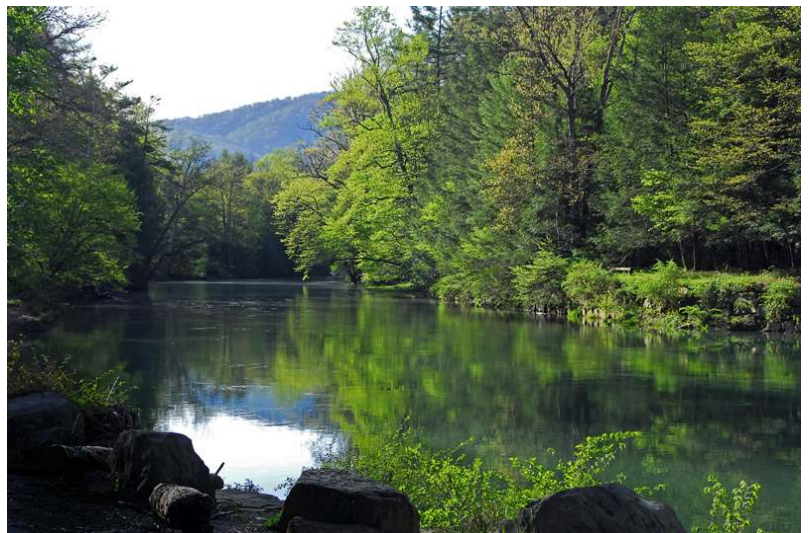
Camping: Blue Bend Recreation Area, Greenbrier State Forest

Lake Sherwood Recreation Area of the Monongahela National Forest 877-444-6777

2015 Annual Meeting

There will be a board meeting at the picnic shelter in the Monongahela National Forest Blue Bend Recreation Area from 3:00 to 4:00 pm. From US 219 just south of Frankford WV take CR 21 east, stay straight on to CR 21/2 through Anthony, WV. Continuing east across the Greenbrier River the road becomes CR 16/2. The recreation area is located on the right a total of eight miles east of US 219 or about four miles west of SR 92 from Alvon, WV. Those attending the annual meeting will receive directions there.

Elections for one board member, treasurer, corresponding secretary and recording secretary will be held and other WVNPS business, as necessary, will be conducted. ♣



Blue Bend Recreation Area Mon NF

By Request Hydrophyllum

When the genus to be selected for any issue is considered the attempt to suit it to the season is important. This time a request by email will be honored. When it first came in it seemed that the size of the genus (4) made it viable and it is widely distributed throughout the WV. But when the Atlas was consulted the number of occurrences was quite low. Clearly this is a genus that could benefit from additional collections and reports. So think spring and early summer and plan to target this genus.

Common names in this genus are variable. Here is a sample

Hydrophyllum appendiculatum WV Appendaged WL: FNA Great WL: MO Woolen Breeches, Notchbract WL: OH Appendaged WL:, VA not present

H. canadense WV Broad-leaved WL; FNA Blunt-leaf WL: MO Broadleaf WL; OH Broad-leaved WL: VA Canada WL

H. Macrophyllum WV Large-leaved WL: FNA Large leaf WL: MO not present: OH Large-leaved WL: VA Hairy WL, Large-leaf WL

H. Virginianum WV Virginia WL, Shawnee Salad, Shawny: FNA Eastern WL

MO WL: Virginia WL, John's cabbage: OH Virginia WL, VA Virginia WL.,

WL =waterleaf, WV Checklist and Atlas, FNA Flora N. A.; MO Steyermark's Flora of Missouri Vol. 3, OH The Dicotyledoneae of Ohio vol. 2, VA Flora of VA.

Hydrophyllum appendiculatum Michx.

This is a biennial herb, lacking rhizomes, with pale lavender or white flowers, the stamens are contained within the corolla or slightly exerted. There is a appendage located at each sinus of the bristly-hairy calyx, hence the name.



Calyx appendages

The stems are pubescent, the basal leaves are often pinnate, or at least heavily lobed, while the cauline leaves are ovate or orbicular, palmately lobed and pubescent. This plant may generally be found in moist woodlands and riverine borders. In West Virginia there are 8 current records concentrated in the Northwestern part of the state and 4 older records .

Hydrophyllum macrophyllum Nutt.

This is the waterleaf that looks as if the leaves have been spotted with water. These large, pubescent leaves are sometimes up to 12 inches long. Both the basal and cauline leaves are pinnately divided into lobes that are perpendicular to the midrib. With a hispid stem this genus is larger than the other eastern members of the genus sometimes reaching 3 feet. The flowers are in rather tight ball, white to pink tinged with exerted stamens. Primarily found in rich woods and borders. It is recorded from 3 current counties and 10 older records exist.



Hydrophyllum virginianum L.

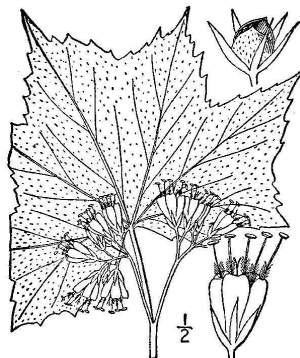
This species is seldom larger than 2 feet tall. This is a waterleaf with pinnate leaves which are divided almost to the midrib. The stem is only sparsely hairy, if at all . Two varieties have been identified based upon flower color, pale white to light lavender var. *virginianum* and deep purple in var. *atranthum* . It will generally be found in both mesic and dry woodlands and thickets. With 14 current records and 19 older ones it is the most recorded *Hydrophyllum* species in West Virginia.



L.

Hydrophyllum canadense

A perennial herb, this plant sports long rhizomes which results in large colonies in woods and flood plains. The stems are glabrous or nearly so. The white blotched pinnately lobed basal leaves are what gives the plant the waterleaf name, the cauline leaves are nearly circular and palmately lobed with stiff hairs on the upper surface. The flowers are a dirty white, with strongly exerted stamens. There are 12 current county records primarily in the northern half o the state with 21 older records scattered throughout the state.



Line drawings from Britton, N.L., and A. Brown. 1913. An illustrated flora of the northern United States, Canada and the British Possessions. 3 vols. Charles Scribner's Sons, New York. Vol. 1: 526. Courtesy of Kentucky Native Plant Society. Scanned by Omnitek Inc.♣

Panther Wildlife Management Area

April 24-26 2015



The damp group

© Photo D. Stevenson

On April 24-26 2015 a dedicated group of WVNPS members and friends gathered at the Panther Wildlife Management Area in McDowell County WV to search for known rarities and to expand the knowledge base for the flora of the southwestern corner of West Virginia. The base of operations was the group camp at the WMA, a pleasant facility with a good kitchen, a big fireplace, baths and beds in different room



Group lodge at Panther WMA

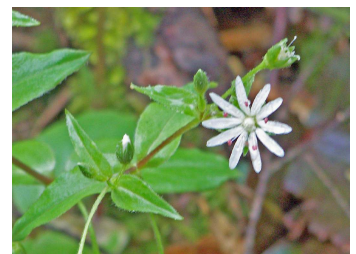
configurations. The weather was less pleasant as the photo of the group in their rain gear shows. Only Saturday afternoon was rain free but that never deterred this group.

The three day observations included 182 species, of which 26 were county records, according to the *Checklist and Atlas of the Vascular Flora of West Virginia*, as updated in the files of West Virginia University's herbarium by Dr. Donna Ford-Werntz. :

Alliaria petiolata, GARLIC MUSTARD Anemone quinquefolia var. minima, DWARF ANEMONE
Aralia racemosa?, SPIKENARD Barbarea vulgaris, YELLOW ROCKET
Betula alleghaniensis?, YELLOW BIRCH -- Carex platyphylla, BROADLEAF SEDGE
Carex torta, TWISTED SEDGE – Carya cordiformis, BITTERNUT HICKORY
Cerastium fontanum ssp. vulgare, COMMON MOUSE-EAR CHICKWEED
Dryopteris carthusiana, SPINULOSE WOOD FERN Dr. goldiana, GOLDIES SHIELD FERN
Fraxinus pennsylvanica, GREEN ASH – Galium aparine?, BEDSTRAW – Geum vernum, SPRING AVENS
Heuchera villosa, HAIRY ALUMROOT -- Hydrocotyle sibthorpioides, WATER-PENNYWORT
Lamium amplexicaule, HENBIT – Liquidambar styraciflua (cult.?), SWEETGUM
Myosoton aquaticum, WATER CHICKWEED – Poa cuspidata, SHORT-LEAVED BLUE GRASS
Ranunculus acris, COMMON BUTTERCUP – Rumex crispus?, DOCK – Toxicodendron radicans, POISON IVY
Veronica officinalis, SPEEDWELL –Veronia peregrina, PURSLANE SPEEDWELL – Vitis sp. , GRAPE



Dwarf Anemone © K.Campbell



Water Chickweed

Listed species included five threatened species:

Anemone quinquefolia var. minima DWARF ANEMONE
Goodyera repens, LESSER RATTLESNAKE PLANTAIN
Heuchera longiflora LONG-FLOWERED ALUMROOT
Prosartes maculata, MANDARIN
Saxifraga caroliniana, CAROLINA SAXIFRAGE

A complete listing of the observed plants will be found on the web site:
www.wvnps.org



Mandarin © K. Campbell

A perusal of the list of county records and listed plants will find that only one species, the dwarf anemone, appears on both. This is not unusual, frequently the WVNPS list from a trip, such as the one to McClintic in Mason County show that very common plants and/or exotics are county records but the state listed species are already on the list for the county. No one would doubt that poison ivy was present in McDowell County, but it remained to be documented, perhaps there is a reason for that, but it is harder to rationalize common mouse-eared chickweed being a county record. It just reinforces the need to document the plants in the field and to carefully check the county lists to be sure that the weed you passed wasn't a record.



Hold it steady this is an important shot

Photographers were out in this dreary weather but many of the photos required using the delete button because of rain drops on the lens or in the air.



Note the rain drops on this photo

Some plants even had multiple opportunities to be recorded for prosperity, e.g., the *Hepatica* in the rocks photographed by both Judy and Kevin, can you guess who took which shot? A few of the other images that survived will be found in the photo file on the web site www.wvnps.org



Photos from the Panther Wildlife Management Area



Fire Pink



Gold Seal

© K. Campbell



Fern-leaf Phacelia



Columbine



Wild Ginger



Habitat Fern-leaf Phacelia



Green Violet

© K. Campbell

Kevin and Judy see the same plants to photograph....again



Dog Lichen *Peltigera* species



Same tree



White variety of the "red Trillium"



Same plant

note the notch out of the petal



Chapter News

Tri State Chapter

On May 2, 2015 nine members and friends of the Tri State Chapter met at the Wayne High School complex in Wayne WV for a trip led by Bernard Adkins. Bernard had served as a teacher and administrator in the Wayne County system for years, leading students on trips to explore nature on the site. The schools are located on the former county home and farm. Some of the farming structures remain, including the greenhouse



Pinxter Flower



Birds Foot Violet

which has been upgraded for use by the horticultural studies students to grow plants for sale. While we were there we could see the garden vegetable starts ready to sell during school hours. The 200+ acres are bounded by roads and a rail line, but that did not reduce the enjoyment of the trip. The main disappointment was finding that many of the elm trees, which were easily accessible, had been fully stripped of their bark. Even if someone considers themselves to be a “wildcrafter” it is still theft. There is a range of habitats on the small portion of the property the group explored; a road leading to utilities which had typical spring woodland and invasives present, a dry oak upland with azaleas and blueberries, a low wetland component and a narrow, rocky gorge. This led to a diversity of plants being present. A short list would include: **Bloodroot, Blue cohosh, Crested Dwarf Iris, Dittany, Sensitive fern, Halberd-leaf violet, Indian Cucumber Root, Long-flowered Alum Root, Pinxter Flower (old record), Pussy toes, Putty Root,**

Rattlesnake Fern (old record), Round-lobed Hepatica, Scrub Pine (old record), Showy orchis, Slippery elm, Old record, Walking fern (old record), Whorled Loosestrife, Wild Bergamot, Wild comfrey. A complete list with scientific names is planned for the web site.

On June 13, 2015 five members tackled the National Recreation Trail at Grayson State Park (a component operated by the US Corps of Engineers) south of Grayson, Kentucky. There were two plant highlights of the trip, both plants would be quite a find in West Virginia and/or Ohio. The first, *Thalictrum mirabile* Small is not known from West Virginia, although the somewhat similar *T. clavatum*, mountain meadowrue, is known from three of the central mountain counties. The two are separated by the curvature of the adaxial margin of the achene, which is concave in



Shrubby Yellow Root



Thalictrum mirabile

T. clavatum and straight in *T. mirabile*. The plants were found in close association with *Xanthorhiza simplicissima* (Shrubby yellowroot) and *Asplenium pinnatifidum*, (pinnatifid spleenwort) on damp rock faces.

Directly above, on the gorge rim, we found *Clethra accuminata*, Michx., the mountain pepperbush, which is known only from mountain counties of WV with 3 old and 3 newer records. Seeing these plants in Kentucky gave the members of the group a good search image, for not only county records, but also for a potential state record. Additional species included: **Enchanters Nightshade, Sweet Pepperbush, Trailing arbutus, St. Andrew's Cross, Cucumber magnolia, Shrubby Yellowroot, Short-sepal Beardtongue, Common polypoidy, Spanish Oak,**

Pinnatifid Spleenwort, Southern Lady Fern, Umbrella magnolia and many more. Again the complete list will be posted on the web site.

News of the West Virginia Native Plant Society

Highlights of the April 25, 2015 Board Meeting

- ! The meeting was held in the Group Camp Building at the Panther Wildlife Management Area, McDowell WV.
- ! 7 Board members and 6 members attended
- ! The society remains in sound fiscal condition.
- ! The Eastern Panhandle Chapter, being reinstated, now has access to the funds held in reserve for their use.
- ! The electronic and printed versions of Native Notes now look different, the print has b & w photos while the electronic version has color photos and additional material.
- ! A revised membership brochure will be placed on the web site.
- ! Steve Mace reported that 1,192 people are on the WVNPS Face book page.
- ! Steve Mace is investigating purchasing 50 orchids from Michigan which have been grown from WV seeds to be planted on the Monongahela National forest.
- ! The Tri State Chapter has two field trips scheduled. The eastern panhandle chapter will hold an inaugural meeting in May at the Yankauer Nature Preserve.
- ! The midsummer meeting will be in Greenbrier County.
- ! The annual meeting will be held Sept. 12-13 in connection with field trips in Summers and Greenbrier counties.
- ! A volunteer has expressed interest in collecting specimens for the herbarium. She requested funding for supplies, Rodney Dever indicated the Eastern Panhandle would help her.
- ! Copies of Native Notes will be distributed to state libraries in digital form, not print form. ❁ If posters are generated they will be distributed electronically.

Welcome to New Members

Terry and Janet Ballard	Huntington WV
Frank Jr. and Carolyn Barker	Charleston WV
Alyssa Hanna	Elkins WV
William Hicks	Bethany WV
Kevin and Rosalind Smith	Huntington WV
Michael Schwartz	Shepherdstown WV
Marion Story	Takoma MD
Allen and Mindy Waldron	Surveyor WV
Mark Watson/Beth Anne Pauley	Milton WV
Les Wright	Buckhannon WV
Jaime Zsiros	Sarver PA

West Virginia Native Plant Society Officers

President -Steve Mace
sdmace@frontiernet.net
(304)-674-5523

Past President- Romie Hughart
romie5006@yahoo.com
(304)-523-1049

Vice President- Emily Grafton
egrafton@gmail.com

Corresponding Secretary_
Helen Gibbins
Gibbins@frontier.com
(304)-736-3287

Recording Secretary-Dan Stevenson
[dstevenson101@gmail.com](mailto:d Stevenson101@gmail.com)
(304)-633-0800

Treasurer - Judi White
Judiwhite@suddenlink.net
304-863-8352

Directors

Donna Ford-Werntz (1 year term)
dford2@wvu.edu
(304)-293-0794

Chris Gatens (3 year term)
(304)-458-2533
cmgatens@frontier.com

Pete Rykert (2 year term)
eagle26241@yahoo.com

Tri State Chapter-Romie Hughart
See above

Kanawha Valley -Steve Mace see above

Eastern Panhandle-Rodney Dever
rodneydever@comcast.net
(304)-676-7438)

Editor_Judith Dumke
dumke@live.marshall.edu
(740)-894-6859

Events of Interest

Sept. 12 Margaret Denison Fall Nature Walks Kanawha State Forest Charleston WV. Registration 8:30 walks 9:00

Sept 17-Dec. 17 *The Mysterious Nature of Fungi* exhibit, Hunt Library, Pittsburgh, Pa. www.huntbotanical.org

Sept 19-20 Ohio Nature Preserves Association annual meeting and field trips. Newark Ohio. www.onapa.org

Oct. 3-4 Ohio Moss and Lichen Foray Montgomery County, www.ohiomosslichen.org

October 9-10 2nd annual botanical symposium Lexington Ky. www.kynps.org

note you may need to insert the web addresses into your address bar. ❀

Assistance Needed

Have you ever felt that the keys you tried to use were made by someone who was just on a different wavelength? If so, you are not alone, we have all felt like that at some time or with some key. To help with this problem, research on what does and does not work with visual keys is underway. There is an on line visual comparison of acorns analysis which asks you to compare characteristics. After the crowd sourced results are compiled a visual key will be constructed. The survey will take about 20 minutes to complete. You will remain anonymous and not be known or identified, even by the researchers. Past work can be found at: <http://aobpla.oxfordjournals.org/content/2011plr005>

to participate go to:

https://uncg.qualtrics.com/SE/?SID=SV_1UggIKNWdPLSYSN ❀

2015 WVNPS MEMBERSHIP RENEWAL OR INITIATION

Name(s) _____

CATEGORIES

Address _____

Life \$200

Regular 12

Student 8

Chapter affiliations (please circle)

Tri-State Chapter 6

Kanawha Valley 0

Eastern Panhandle 0

E-Mail _____

I prefer to receive the Native Notes by mail _____ e-mail _____

You must be a member of the statewide WVNPS in order to be a member of a local chapter.

Please make the check payable to West Virginia Native Plant Society;

Include local chapter dues, if pertinent. Dues are for one calendar year.

Send dues to:

Judi White

WVNPS Treasurer

148 Wellesley Dr.

Washington WV 26181